

The Lost Sheep of Israel Found

8 Criteria for Identifying Ethnic Israel

Rev. R. D. Tidwell

RichTidwell.com

ABSTRACT

This study presents a two-part argument of considerable prophetic consequence.

Part I, The Edomite Hypothesis, argues from first-century historiography, modern genetics, and prophetic Scripture that the ruling class of modern Jerusalem—like the Herodian dynasty of antiquity—are largely Edomite (Idumean) converts to Judaism and not the biological descendants of the Tribe of Judah.

Part II, The Lost Sheep Found, then addresses the natural follow-on question raised by Part I: if the modern Ashkenazi are not ethnic Israel, where are the true genetic descendants of Jacob today? To answer this poignant question, I present eight data-driven criteria anchored to the biblical timeline of the 1446 BC Exodus and the 1399 BC Conquest of Canaan. In this portion of the study, I have presented and tested my hypothesis against peer-reviewed genetic research, ancient DNA studies, historical primary sources, and comparative linguistics.

Both parts are governed by two foundational principles: first, salvation is by faith in Jesus Christ alone, not by blood or ancestry (Gal 3:28; Rom 10:13); second, God declared that ethnic Israel would never cease to exist as a distinct people (Jer 31:35-37). Consequently, they can be found.

The convergence of evidence across both studies points toward a single conclusion: the modern occupiers of Jerusalem are Edomite impostors, while the genetic descendants of Jacob—Haplogroup R populations of Europe and their diaspora—remain in prophetic amnesia (Jeremiah 50:6), awaiting their awakening and gathering at the return of the Messiah (Ezekiel 37).

“My people have become Lost Sheep;
Their shepherds have led them astray.
They have made them turn aside *on* the mountains;
They have gone along from mountain to hill
And have forgotten their resting place.”

Jeremiah 50:6

PART I

The Edomite Hypothesis: Unmasking the Synagogue of Satan

Introduction

A hypothesis, according to the Oxford definition, is a 'supposition or proposed explanation made on the basis of limited evidence as a starting point for further investigation.' The Edomite Hypothesis is the postulation that the Modern Jews are Edomite (Idumean) converts to Judaism—not the biological tribe of Judah. In order to understand the people governing the modern state called Israel and dragging the West into seemingly endless conflict in the Middle East, we must heed the Word of the Lord Jesus in the Book of Revelation. During John's vision, our Lord Jesus Christ gave us a clear warning about a people on Earth who openly and deliberately claim His heritage while serving another master:

*"Behold, I will cause those of the Synagogue of Satan, **who say they are Jews and are not, but lie**—I will make them come and bow down at your feet, and make them know that I have loved you."—Revelation 3:9*

Jesus brought this group to our attention for an important reason: it is a red-letter warning from the Savior Himself. He is identifying a nation on earth that claims a Hebrew heritage while being biological and spiritual impostors. As this study will demonstrate, these individuals are the primary enemies of Jesus during His earthly ministry, and they remain the primary enemies of His Church in these Last Days.

The Maccabean Revolt and the Forced Conversion of Edom

To understand how an Edomite came to sit on the throne of Jerusalem, one must first understand the extraordinary sequence of events that made it possible.

In 167 BC, the Seleucid Greek king Antiochus IV Epiphanes desecrated the Temple in Jerusalem, erecting an altar to Zeus and outlawing Jewish religious practice. This triggered the Maccabean Revolt, led by the priest Mattathias and his sons—most famously Judas Maccabeus. After years of guerrilla warfare, the Maccabees succeeded in retaking Jerusalem and rededicating the Temple in 164 BC, an event commemorated to this day in the festival of Hanukkah (1 Maccabees 4:36-59¹).

The victorious Maccabean family established what is known as the Hasmonean Dynasty—a priestly-political ruling house that governed Judea from approximately 140 BC until the Roman conquest of 63 BC. The Hasmoneans were genuine biological Israelites of the tribe of Levi, and it was their descendants—including King Antigonus—who represented the last legitimate Hebrew rulers of Jerusalem.

¹ 1 Maccabees 4:36-59—The rededication of the Temple following the Maccabean Revolt. (Deuterocanonical; also summarized in Josephus, Antiquities 12.7.6.)

The pivotal event for the Edomite Hypothesis occurred under the Hasmonean king John Hyrcanus I (reigned 134–104 BC). After conquering the region of Idumea—the land south of Judah inhabited by the descendants of Esau—Hyrcanus made a fateful decision recorded by Josephus²:

"Hyrcanus took also Dora and Marissa, cities of Idumea, and subdued all the Idumeans; and permitted them to stay in that country, if they would circumcise their genitals, and make use of the laws of the Jews; and they were so desirous of living in the country of their forefathers, that they submitted to the use of circumcision, and the rest of the Jewish ways of living; at which time therefore this befell them, that they were hereafter no other than Jews."—Josephus, Antiquities 13.9.1

In a single political act, an entire nation of Edomites—the biological descendants of Esau, who had intermarried with Canaanites for centuries (Gen 36:2)—were absorbed into the Jewish religious community by forced conversion. Josephus' contemporary, the Pharisaic scholar Strabo of Amasea, corroborated this record³, noting that the Idumeans "joined the Jews and shared in the same customs." From this point forward, Edomites could legally call themselves Jews—fulfilling, centuries before John recorded it, the precise description of Revelation 3:9: those who "say they are Jews and are not, but lie."

It is directly out of this Idumean convert class that the family of Herod the Great emerged. Herod's father, Antipater the Idumean⁴, rose to power as a political operative under the Hasmoneans—not as a rightful heir, but as an appointed administrator. When the Roman Senate ultimately awarded the kingship of Judea to Antipater's son Herod in 37 BC, they placed on David's throne not a son of Jacob, but a son of Esau—exactly as Antigonus protested.

The Herodian Dynasty

Almost no Believers—including members of the Clergy—are aware of the ethnic origins of King Herod the Great and his offspring. As we discovered in the previous section, Herod, the 'King of the Jews,' was not a Jew at all, but an imposter. He was an illegitimate ruler, rejected by the Hasmoneans, a mere Roman Senate implant who sat on the throne of Jerusalem not by birthright, but only with the help of the secular West. His illegitimate royal position in Jerusalem during the First Advent of Jesus prophetically foreshadows the occupation of the same Edomites ruling in Jerusalem prior to the Second Advent (Obadiah 1:15-21, Zechariah 14:21, Ezekiel 11:15-17).

"The deliverers will ascend Mount Zion, to judge the mountain of Esau, and the kingdom will be the Lord's" – Obadiah 1:21

The famous first-century historian Josephus records that King Antigonus, the last Hasmonean king of Judea, denigrated Herod as **"no more than a private man, and an Idumean, i.e. a Half-Jew"**

² Josephus, Antiquities 13.9.1—The forced circumcision and conversion of the Idumeans under John Hyrcanus. <https://sacred-texts.com/jud/josephus/index.htm#aj>

³ Strabo of Amasea, Geography 16.2.34—Corroborating account of the Idumean forced conversion: "The Idumeans are Nabataeans, but owing to a sedition they were banished from there, joined the Judeans, and shared in the same customs with them." https://penelope.uchicago.edu/Thayer/E/Roman/Texts/Strabo/16B*.html

⁴ Josephus, Antiquities 14.1.3; Jewish War 1.6.2—Antipater the Idumean's rise to political prominence under the Hasmonean rulers, establishing the family line from which Herod descended.

who was unfit for the Israelite throne.⁵ Antigonus revealed that Herod could not rightly rule Jerusalem due to being an Idumean—the first-century name for the descendants of Esau known as the Edomites. Prior to the Slaughter of the Innocents recorded in Matthew 2:16, Josephus records that King Herod had also slaughtered the original Jewish ruling council known as the Sanhedrin, replacing them with those who would later put Christ on trial:⁶

"...for when Herod had received the kingdom, he slew all the members of this Sanhedrin, and Hyrcanus himself also..."—Antiquities 14.9.4

Josephus identifies three religious sects in operation during the life of Jesus: the Pharisees, the Sadducees, and the Essenes. Crucially, in his work *Jewish War* Book 2, Josephus states that the Essenes alone were 'Jews by birth':⁷

"For there are three philosophical sects among the Jews. The followers of the first of which are the Pharisees; of the second, the Sadducees; and the third sect, which pretends to a severer discipline, are called Essenes. These last are Jews by birth, and seem to have a greater affection for one another than the other sects have."—Jewish War 2.8.2

Josephus is simultaneously confirming the outcome of the events surrounding Herod recorded in the Antiquities. When the genuine Sanhedrin had been slaughtered, the Pharisees and Sadducees were replaced by Herod's supporters—including Edomite converts who 'say they are Jews and are not' (Rev 2:9). This is why Jesus often calls the Pharisees and Sadducees 'hypocrites' (Greek: hupokritēs)—the term for actors or stage-players—for many of them were precisely that: imposters pretending to be the people of God while working to murder the Jewish Messiah.

This becomes abundantly clear when the Pharisees openly declared to Jesus 'we are Abraham's descendants and have never been enslaved to anyone' (John 8:33). The Israelites were slaves in Egypt and were commanded to continually remind their sons of this fact (Deut 6:21). Genuine Jews would never have made such a claim. Furthermore, Judas Iscariot—the one disciple whom 'Satan entered' (Luke 22:3)—bears the Hebrew name Ish Kerioth, meaning 'Man of Kerioth,' a region touching the border of northern Edom that was swarming with Edomite converts in the first century. While every one of the other eleven disciples were from Galilee⁸, Judas alone came from Edomite country.

In addition to their appropriation of Jacob's lands during the Babylonian siege of Jerusalem, the Edomites played a pivotal role during the First Advent of our Lord Jesus: King Herod "The Great" slaughtered the infants in an attempt at preventing the Messiah, Judas betrayed the Son of Man

⁵Josephus, Antiquities of the Jews 14.15.2 (Whiston translation): Antigonus declared Herod 'no more than a private man, and an Idumean, i.e. a Half-Jew.' <https://sacred-texts.com/jud/josephus/index.htm#aaj>

⁶Josephus, Antiquities 14.9.4–5: '...for when Herod had received the kingdom, he slew all the members of this Sanhedrin, and Hyrcanus himself also...' <https://www.biblestudytools.com/history/flavius-josephus/antiquities-jews/book-14/chapter-9.html>

⁷Josephus, Jewish War 2.8.2 (Whiston translation): 'For there are three philosophical sects among the Jews... These last [Essenes] are Jews by birth, and seem to have a greater affection for one another than the other sects have.' <https://www.biblestudytools.com/history/flavius-josephus/war-of-the-jews/book-2/chapter-8.html>

⁸Acts 1:11—the assembled Apostles are addressed collectively as 'Men of Galilee' by the angels at the Ascension. Peter and Andrew from Bethsaida in Galilee (John 1:44; Matt 4:18); James and John called from the Sea of Galilee (Matt 4:21); Philip from Bethsaida in Galilee (John 12:21); Nathanael from Cana of Galilee (John 21:2); Matthew called at Capernaum in Galilee (Matt 9:9). Judas Iscariot alone bears a southern geographic surname—Ish Kerioth ('Man of Kerioth'), a town in the southernmost portion of Judah on the border of Edom (Josh 15:25; Jer 48:24).

with a kiss, and an infiltrated Sanhedrin convicted Jesus. The Lord may have died on a Roman cross, but the Edomites were instrumental in placing Him there.



Figure 1 - Map of Herodian Era Judea (Spanish)

Genetic Investigation

Dr. Karl Skorecki, the leading geneticist most famous for his discovery of the Cohen Modal Haplotype (CMH) in 1997, proved that Ashkenazi and Sephardi Jews descend from one common male ancestor approximately 3,000 years ago. When asked directly: 'Are the Jewish people of today directly related to the Israelites of the Bible?' his answer was a staggering admission:⁹

"We don't have DNA from the Israelites of the Bible. So there's no way to provide a direct answer to your question."—Dr. Karl Skorecki

Dr. Skorecki further noted that the Modern Jewish population's closest genetic relatives are Levantine populations—Druze, Palestinians, and Syrians—rather than their non-Jewish neighbors in the diaspora. This is precisely where the Herodian historian Ptolemy of Ascalon recorded that the Edomites, the descendants of Esau, originated from:

"The Jews are such by nature, and from the beginning, whilst the Idumeans were not Jews from the beginning, but Phoenicians and Syrians; but being afterward subdued by the Jews, and compelled to be circumcised, and to unite into one nation and to be subject to the same laws, they were called Jews."—Ammonius quoting Ptolemy of Ascalon, De Differentia Vocabulorum, no. 243¹⁰¹¹

Hence it was that the kingdom of Herod and his posterity were called, by the Hebrews, 'The Kingdom of the Proselytes.' The genetic proximity to Syrian and Levantine populations aligns perfectly with the Edomite Hypothesis: Esau, the father of Edom, married several Canaanite women in rebellion against his father Isaac (Gen 36:2). After millennia of mixing in the region, the descendants of Esau absorbed Canaanite genetics—descendants of Ham rather than Shem—while retaining the cultural identity of Judaism.

The 2020 Cell study '*The Genomic History of the Bronze Age Southern Levant*' reveals that the Ashkenazi are genetically Canaanite¹²—descendants of Ham rather than of Shem. No genetic study has extracted DNA from First Temple Period Israelite gravesites. Religious authorities in Jerusalem consistently refuse to allow DNA extraction from those graves—an act that would either confirm or permanently refute their claim to be the Israelites of the Bible. The primary authority on Jewish genetics has admitted: 'We don't have DNA from the Israelites of the Bible.'¹³

⁹ Dr. Karl Skorecki, interview with The Ask Project. Skorecki is best known for his 1997 discovery of the Cohen Modal Haplotype (CMH), proving Ashkenazi and Sephardi Jews descend from one common male ancestor approximately 3,000 years ago. https://youtu.be/OOeJr0z_01M

¹⁰ Katell Berthelot. "Judaism as 'Citizenship' and the Question of the Impact of Rome". Katell Berthelot; Jonathan J. Price. In *The Crucible of Empire: The Impact of Roman Citizenship upon Greeks, Jews and Christians*, Peeter Publishers, pp.107-129, 2019, 978-90-429-3668-3. (hal-02338890)

¹¹ Josephus, *Antiquities of the Jews* 13.9.1, see footnote 418. <https://www.ccel.org/ccel/josephus/complete.ii.xiv.ix.html>

¹² Agranat-Tamir et al. (2020)—*The Genomic History of the Bronze Age Southern Levant*, Cell. <https://www.sciencedirect.com/science/article/pii/S0092867420304876>. See also associated reporting: <https://www.jpost.com/archaeology/article-860458>

¹³ See footnote 9.

The Edomites' Desire for Jacob's Land

The Edomites are prophesied to be 'small among the nations' and 'greatly despised' (Obadiah 1:2). As of 2026, there are only approximately 11 million Ashkenazi on earth—a tiny fraction of humanity. According to Scripture, the descendants of Esau have always been seeking to dispossess Jacob from the lands granted to him by God:

"Because you have said, 'These two nations and these two lands [Israel and Judah] will be mine, and we will possess them,' although the Lord was there..."—Ezekiel 35:10

After losing his birthright, Esau has long desired Jacob's lands (Eze 35:10; 36:5; Ps 83:6-12), and he successfully possessed them during the Babylonian Captivity by assisting in the Siege of Jerusalem (Oba 1:11-14; Eze 36:5). These acts made the Edomites **'the people toward whom the Lord is indignant forever'** (Mal 1:4). In Ezekiel 36:5, God speaks against 'all Edom' who 'appropriated My land for themselves as a possession with wholehearted joy.' Today, we see the same spirit operating as the nations surrounding modern Israel's borders are systematically destroyed in the name of Greater Israel.

Counterfeit Return versus Real Restoration

Scripture is unambiguous: True Israel and Judah do not repossess their lands en masse until the Second Advent. The 1917 Balfour Declaration¹⁴ was a man-inspired promise made to the Rothschild family¹⁵—not a fulfillment of biblical prophecy. When translated into Hebrew based on its etymological meaning, the surname Rothschild corresponds to 'Magen Edom' (מגן אֶדוֹם)—'Shield of Edom.' Multiple prophetic texts describe a completely different timeline for the true restoration of Israel:

The Simultaneous Return (Jeremiah 3:17-18): Jerusalem is only called the 'Throne of the Lord' when the Messiah returns to reign. It is at that time—and not before—that the house of Judah walks together with the house of Israel to the land of their fathers.¹⁶

The Two Sticks and the Davidic King (Ezekiel 37:15-28): God simultaneously joins the stick of Judah with the stick of Joseph (Ephraim) into one nation under one King, identified as 'My servant David'—a Messianic title for Jesus Christ. Any nation both occupying Jerusalem and calling itself 'Israel' without the Son of David on the throne is a counterfeit.¹⁷

¹⁴Balfour Declaration (1917)—The British Government's letter to Lord Walter Rothschild committing to 'the establishment in Palestine of a national home for the Jewish people.' https://en.wikipedia.org/wiki/Balfour_Declaration

¹⁵The name Rothschild derives from the German 'Rotes Schild' (Red Shield). The Hebrew equivalent 'Magen Edom' (מגן אֶדוֹם) translates as 'Shield of Edom.' The Rothschild family received the Balfour Declaration in 1917 and played an instrumental role in the establishment of the modern State of Israel in 1948.

¹⁶Jeremiah 3:17-18—'At that time they will call Jerusalem The Throne of the LORD, and all the nations will be gathered to it... In those days the house of Judah will walk with the house of Israel, and they will come together from the land of the north to the land I gave your fathers as an inheritance.'

¹⁷Ezekiel 37:15-28—The Two Sticks prophecy: God joins the stick of Judah with the stick of Joseph (Ephraim) and declares: 'I will make them one nation in the land... and one king will be king for all of them.' The king is identified as 'My servant David' (v.24), a messianic title for Jesus Christ (Matt 1:1; 2 Sam 7:12-16).

The Second Recovery (Isaiah 11:11-12): God promises to recover the remnant of His people a *second* time from the islands of the sea and the four corners of the earth, when the 'Root of Jesse' stands as a signal.¹⁸ This great multitude comes primarily from the North as well as the Ends of the Earth (Jeremiah 31:8, see also Jer 3:12, 3:17-18, 16:14-15, 23:7-8, Zech 2:6, Isa 43:5-6, 49:12, 41:9, Deut 30:4, Isa 11:12, Deut 28:64). This spectacular event is prophesied to dwarf the Exodus of the Israelite from Egypt (Jer 16:14-15, 23:7-8).

“Therefore behold, days are coming,” declares the Lord, “when it will no longer be said, ‘As the Lord lives, who brought up the sons of Israel out of the land of Egypt,’

but, ‘As the Lord lives, who brought up the sons of Israel from the land of the north and from all the countries where He had banished them.’ For I will restore them to their own land which I gave to their fathers. – Jeremiah 16:14-15

Possessing the Remnant of Edom (Amos 9:11-12; Obadiah 1:21): On the day the Lord raises up the 'fallen booth of David,' His people will possess the remnant of Edom. Deliverers will ascend Mount Zion to judge the mountain of Esau, and when the Messiah returns, there will 'no longer be a Canaanite in the House of the Lord' (Zech 14:21).^{19,20}

The War of 1948 was not the return of Ethnic Israel—it was the establishment of a Counterfeit State. It was the false return before ushering in a false messiah (the Antichrist), fulfilling the prophesied final Edomite occupation prior to the return of Jesus our Lord. The current occupiers of Zion are impostors who, like a 'brood of vipers' (Matt 12:34), have entered the Holy Land while the true descendants of Jacob remain in a state of Prophetic Amnesia, having forgotten who they are until the Last Days (Jer 50:6; Lam 2:6; Eze 37:4).

"My people have become lost sheep; their shepherds have led them astray. They have made them turn aside on the mountains; they have gone along from mountain to hill and have forgotten their resting place."—Jeremiah 50:6

Geopolitical Implications

Winston Churchill, writing in 1920, warned of 'a world-wide conspiracy for the overthrow of civilisation' driven by 'International Jews.' His article “Zionism versus Bolshevism” assumed that if the International Jews were given the ancestral lands of Jacob, they would cease their campaign to dominate other countries.²¹ In light of the genocide in Gaza, as well as the war in Iran and

¹⁸Isaiah 11:11-12—'Then it will happen on that day that the Lord will again recover the second time with His hand the remnant of His people... And He will lift up a standard for the nations and assemble the banished ones of Israel, and will gather the dispersed of Judah from the four corners of the earth.'

¹⁹Amos 9:11-12—'In that day I will raise up the fallen booth of David... so that they may possess the remnant of Edom and all the nations who are called by My name.' See also Obadiah 1:21: 'The deliverers will ascend Mount Zion to judge the mountain of Esau, and the kingdom will be the LORD's.'

²⁰Zechariah 14:21—'...and there will no longer be a Canaanite in the house of the LORD of hosts in that day.' This prophecy confirms that Canaanite-lineage occupants of the Temple will be expelled at the return of the Messiah.

²¹Winston S. Churchill, 'Zionism versus Bolshevism: A Struggle for the Soul of the Jewish People,' Sunday Herald (London), February 8, 1920, p. 5. https://en.wikisource.org/wiki/Zionism_versus_Bolshevism

Lebanon, we now know that assumption was false. Their goal is not merely current Israeli borders, not even the 'Greater Israel' campaign; rather, their overarching strategy is the total conquest and control of world commerce as prophesied in Scripture (Rev 13:16-17).

Campaign contribution data compiled by OpenSecrets DC²² reveals the extent of Jewish influence in the United States: 416 of 435 U.S. House members (95%) and 59 of 100 U.S. Senators (59%) have received contributions from pro-Israel groups (2026). Track AIPAC²³ has documented more than \$230 million in pro-Israel interest group spending benefiting President Donald Trump since 2020. Meanwhile, the United States has transferred over \$350 billion to Israel since 1948²⁴—funds that could have improved the welfare of American Christian families rather than foreign interests.

Part I Conclusion

We have identified the enemy: the Synagogue of Satan, comprised of Edomite converts to Judaism 'who say that they are Jews and are not, but lie' (Rev 3:9). We have the historical records of Josephus, the genetic admissions of Dr. Skorecki, the historiography of Ptolemy of Ascalon, and the prophetic witness of Ezekiel, Obadiah, and Zechariah to support this hypothesis. The Edomite Hypothesis is not a conspiracy theory—it is a proposed explanation made on the basis of mounting historical, genetic, and Scriptural evidence demanding serious investigation.

Moreover, the question naturally arising from Part I is equally consequential: if the Ashkenazi are not ethnic Israel, then where are the true genetic descendants of Jacob?

It is to that question that we now turn.

²²OpenSecrets.org—Pro-Israel PAC contributions to U.S. Federal candidates. <https://www.opensecrets.org/industries/indus?ind=Q05>. Data cited: 416 of 435 House members (95%) and 59 of 100 Senators (59%) received contributions from pro-Israel interest groups.

²³Track AIPAC—Documented pro-Israel interest group spending benefiting President Donald Trump since 2020 exceeding \$230 million. <https://www.trackaipac.com/trump>

²⁴Council on Foreign Relations—U.S. Aid to Israel: Four Charts. 'Israel has been the largest cumulative recipient of U.S. foreign aid since its founding, receiving over \$300 billion [now \$350 billion as of 2026].' <https://www.cfr.org/articles/us-aid-israel-four-charts>

PART II

The Lost Sheep Found: 8 Criteria for Identifying Ethnic Israel

Introduction

Having established in Part I that the modern occupiers of Jerusalem are largely Edomite converts and not the biological tribe of Judah, we are now confronted with a question of enormous prophetic consequence:

Where are the genetic descendants of Jacob on earth today?

Most Christians have been taught one of two positions: (1) that the modern State of Israel represents the fulfillment of biblical prophecy regarding the return of Jacob's descendants, or (2) that the Church has replaced Israel and the ethnic people of God no longer exist as a distinct people. As this study will demonstrate, both positions are difficult to sustain against the weight of Scripture and against the mounting evidence of modern genetic research.

Two foundational principles govern the inquiry. First and most importantly: salvation is by faith in Jesus Christ alone, not by blood or ancestry—'there is neither Jew nor Greek...for you are all one in Christ Jesus' (Gal 3:28). The gospel is for all creation (Mark 16:15-16, Isa 49:6). Second: God Himself declared that ethnic Israel would never cease to exist as a distinct people—'If this fixed order departs from before me, declares the LORD, then shall the offspring of Israel cease from being a nation before me forever' (Jer 31:36). The 'natural branches' (Rom 11:24) continue to exist. This article is, in part, dedicated to finding them.

“They are Israelites, and to them belong the adoption, the glory,
the covenants, the giving of the law, the worship, and the promises.
To them belong the patriarchs, and from their race, according to the flesh,
is the Christ, who is God over all, blessed forever. Amen.”

Romans 9:4-5

Understanding Modern Genetic Research

Modern Y-DNA research traces the paternal line through inherited genetic markers called Haplogroups—groups of similar genetic sequences assigned letters (A through T) representing distinct lineages descending from a common male ancestor. Principal Component Analysis (PCA) is a statistical method used to visualize genetic similarity between populations; populations plotted close together share more DNA in common.

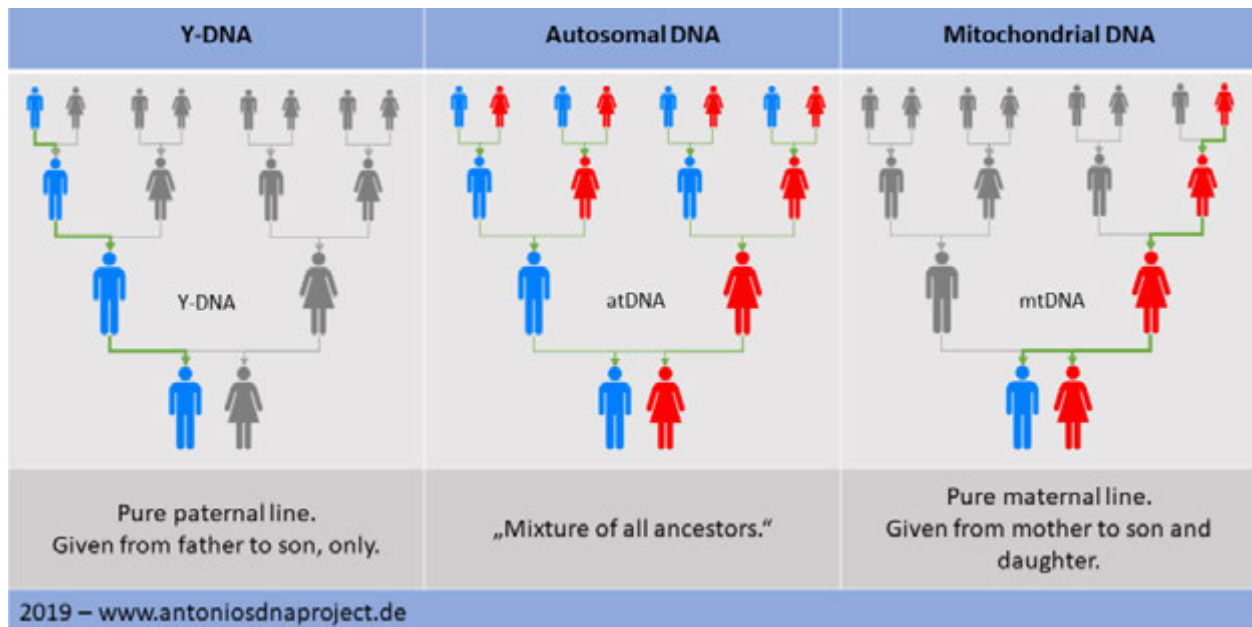


Figure 2 - Paternal, Maternal, and Autosomal DNA

Modern genetics has confirmed what the Bible has always taught: every living person descended from a single common male ancestor.²⁵ Noah's three sons—Shem, Ham, and Japheth—provide the foundational framework for understanding the genetic distribution of mankind after the Flood. The three primary genetic clusters identified by modern science (Africa, East Asia, and Europe) correspond precisely to these three sons.²⁶

Ham: Father of Africa and Canaan

Scripture identifies Ham's descendants as Cush, Mizraim, Put, and Canaan (Gen 10:6). Egypt is repeatedly called the 'land of Ham' (Ps 78:51; 105:23; 106:22). Josephus confirms this, explicitly identifying Mizraim with Egypt and Cush with Ethiopia.²⁷ Likewise, Put is associated with Libya (Jer 46:9), and Canaan with the Levant.

²⁵Poznik et al. (2013)—Sequencing Y Chromosomes Resolves Discrepancy in Time to Common Ancestor of Males Versus Females, *Science*. <https://pmc.ncbi.nlm.nih.gov/articles/PMC4032117/>

²⁶Tateno et al. (2014)—Divergence of East Asians and Europeans Estimated Using Male- and Female-Specific Genetic Markers, *Genome Biology and Evolution*. <https://pmc.ncbi.nlm.nih.gov/articles/PMC3971580/>

²⁷Josephus, *Antiquities of the Jews*, 1.6.2 (Whiston translation). <https://sacred-texts.com/jud/josephus/index.htm#a0j>

Consistent with Scripture, ancient gravesites across North Africa and the Levant overwhelmingly present Haplogroup E as the dominant paternal line.²⁸ In the lands of Ham, E is by far the most prevalent, representing the Hamitic signature from Egypt and Ethiopia to the Canaanite populations of the Levant.²⁹³⁰

Therefore, we can conclude that the African genetic cluster—carrying predominantly Haplogroups E, A, and B—is the genetic expression of Ham’s descendants.³¹

Japheth: Father of the East

Conventional scholarship assigns Javan, son of Japheth, as the ancestor of the Greeks. However, in a remarkable letter recorded by Josephus and in 1 Maccabees 12:19-23, the Lacedemonian (Spartan) King Areus wrote to the High Priest claiming that 'both the Jews and the Lacedemonians are of one stock, and are derived from the kindred of Abraham.'³² Ancient DNA analysis confirmed that 4 out of 5 Bronze Age Greek males carried Haplogroup J—the Abrahamitic, Shemite lineage.³³³⁴

The location of Tarshish, son of Javan, is assumed to have existed in the Mediterranean, though no archeological findings confirm this notion. In the Biblical narrative, Israelites built ships on the Red Sea for voyages to Tarshish, and returned with peacocks and yellow jasper every three years (1 Kgs 10:22; 2 Chr 9:20-21)—both indigenous to India and East Asia.

Therefore, the East Asian genetic cluster, dominated by Haplogroup O,³⁵ along with N, C, D, and Q, represents the descendants of Japheth, the “Coastland Peoples” dwelling at the “distant coastlands,” including the Java Sea³⁶ (Gen 10:5, Isa 66:19, 60:9, Ps 72:10). In fact, the British scholar Thomas Stamford Raffles in his work *History of Java*, suggested a possible source for the word Java is the Malay word jauh, meaning “beyond” or “distant”—the precise word used to describe the lands of Javan (Isa 66:19).³⁷

²⁸ Solé-Morata et al. (2017) "Whole Y-chromosome sequences reveal an extremely recent origin of the most common North African paternal lineage E-M183 (M81)" *Scientific Reports* - <https://www.nature.com/articles/s41598-017-16271-y>

²⁹ Semino et al. (2004) "Origin, Diffusion, and Differentiation of Y-Chromosome Haplogroups E and J: Inferences on the Neolithization of Europe and Later Migratory Events in the Mediterranean Area" *American Journal of Human Genetics*, 74(5), 1023–1034. <https://pmc.ncbi.nlm.nih.gov/articles/PMC1182204/>

³⁰ Cruciani et al. (2004) "Phylogeographic Analysis of Haplogroup E3b (E-M215) Y Chromosomes Reveals Multiple Migratory Events Within and Out of Africa" *American Journal of Human Genetics*, 74(5), 1014–1022. <https://pmc.ncbi.nlm.nih.gov/articles/PMC1181964/>

³¹ de Filippo et al. (2011) "Y-Chromosomal Variation in Sub-Saharan Africa: Insights Into the History of Niger-Congo Groups" *Molecular Biology and Evolution*, 28(3), 1255–1269. <https://pmc.ncbi.nlm.nih.gov/articles/PMC3561512/>

³² Josephus, *Antiquities* 12.4.10; 1 Maccabees 12:19-23.

³³ Lazaridis et al. (2017)—Genetic Origins of the Minoans and Mycenaeans, *Nature*. <https://www.nature.com/articles/nature23310>

³⁴ Clemente et al. (2021)—The Genomic History of the Aegean Palatial Civilizations, *Cell*. [https://www.cell.com/cell/fulltext/S0092-8674\(21\)00460-6](https://www.cell.com/cell/fulltext/S0092-8674(21)00460-6)

³⁵ Haplogroup O comprises 50–75% of the population across much of East Asia. Zhong et al. (2011) ("Extended Y Chromosome Investigation Suggests Postglacial Migrations of Modern Humans into East Asia via the Northern Route," *Molecular Biology and Evolution*)

³⁶ The Java Sea, whose island takes its name from the ancient Sanskrit Yāvadvīpa, bears a striking phonetic resemblance to the Hebrew Yāvān (Javan), son of Japheth. Whether this reflects a genuine genealogical memory embedded in the ancient toponymy, or a parallel linguistic coincidence, the Java Sea sits exactly in the region Scripture designates for the Coastland Peoples of Javan's descendants (Gen 10:4-5).

³⁷ Raffles, Thomas Stamford. *The History of Java*. London: Black, Parbury, and Allen, 1817. Vol. 2

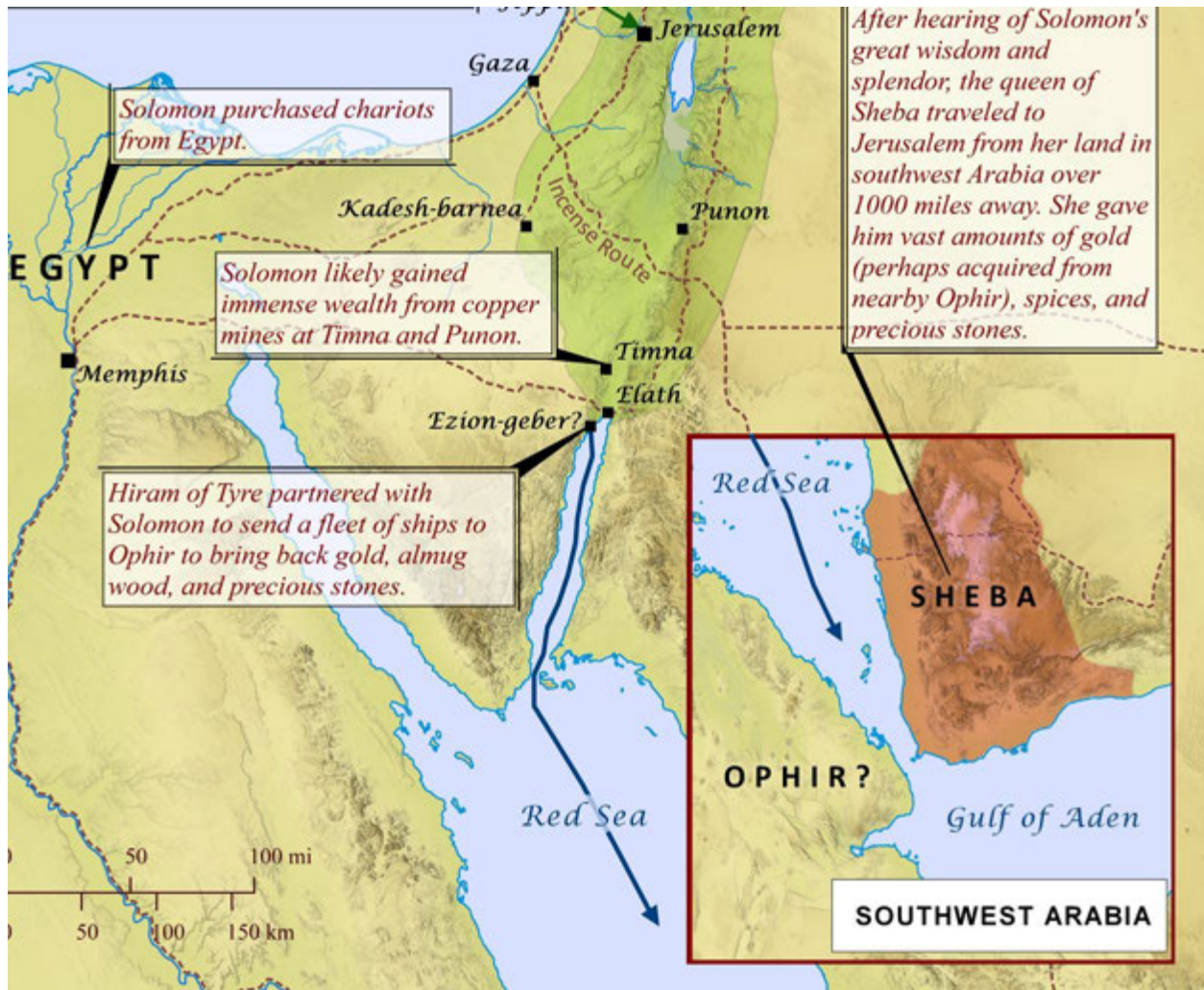


Figure 3 - Proposed Location of Ezion-Geber



Figure 4 - Map Showing the Distribution of Peafowl

Shem: Father of the Shemites—Including the Europeans

That leaves the European genetic cluster as Shemitic in origin. Haplogroups G, J, I, and R are all Shemite sibling lines.³⁸³⁹

G is predominant in the Caucasus; J dominates the Near and Middle East; I is found predominantly in Scandinavia—and J and I are sibling subclades, meaning the Vikings and the Persians share a common Shemite ancestor. While these findings are shocking, Scripture confirms Abraham himself sent his servants north toward Haran (Gen 11:31) to find a wife for Isaac, because his extended kin had already migrated in that direction.

Haplogroup R—the most recent mutation from this Shemite pool and the single most common haplogroup in Europe and Central Asia—is the prime candidate for the genetic signature of Israel.

We will confirm this extraordinary postulation by employing both Scriptural and empirical evidence in the 8 Criteria for Identifying Israel below.

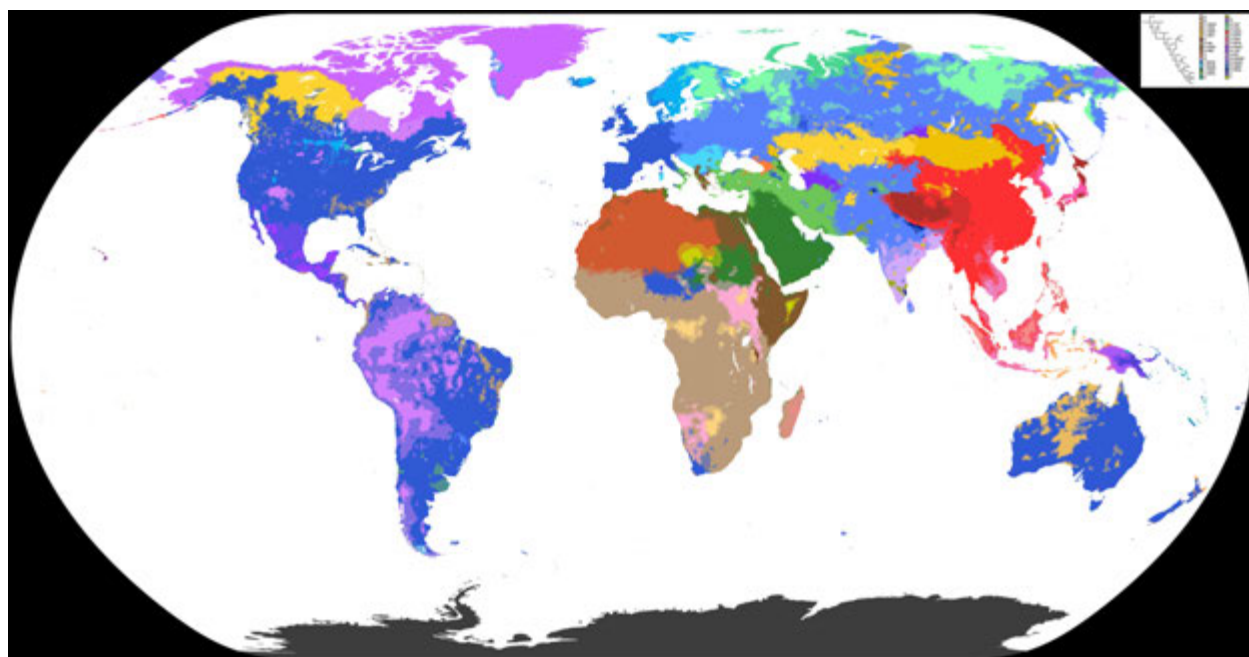


Figure 5 - World Haplogroup Map

³⁸Semino et al. (2004)—Origin, Diffusion, and Differentiation of Y-Chromosome Haplogroups E and J, *American Journal of Human Genetics*. <https://pmc.ncbi.nlm.nih.gov/articles/PMC1182204/>

³⁹Sahakyan et al. (2017)—Origin and spread of human mitochondrial DNA haplogroup U7, *Scientific Reports*. - <https://pmc.ncbi.nlm.nih.gov/articles/PMC5384202/>

8 Criteria for Identifying Ethnic Israel

The following eight criteria are derived directly from Scripture and tested against the best available genetic, archaeological, and historical evidence. Each criterion must be met simultaneously for a population to be a credible candidate for Ethnic Israel.

Criterion 1: Israel Must Be 'Peculiar' from the Natives of Canaan

"For thou art an holy people unto the Lord thy God, and the Lord hath chosen thee to be a peculiar people unto himself, above all the nations that are upon the earth."—Deuteronomy 14:2

God commanded Israel to remain genetically and culturally distinct from the Canaanites (Deut 7:1-4; Ex 34:11-16; Josh 23:11-13; Ezra 9–10; Neh 13:23-27). Research by Haber et al.^{40,41} and Agranat-Tamir et al.⁴² demonstrates that the Levant was dominated by Haplogroups J and E from the Neolithic through the Bronze Age. In stark contrast, all individuals carrying Haplogroup R found at Israelite sites are classified by researchers as genetic 'outliers,' listed in the Mallick et al. (2024) AADR database.⁴³

MEGIDDO (Tel Megiddo) — 5 Bodies

(City of Manasseh — Agranat-Tamir et al. 2020)

Sample	Subclade	Period	Descendants Cluster Today
I10269	R-M207 (R, unresolved)	Megiddo MB III	Broad R — Europe & Central Asia
I10359	R-L23 (R1b)	Megiddo MB III–LB I	NW Europe (R1b-L23 is the dominant W. European line)
I10361	R-L23 (R1b)	Megiddo MB III–LB I	NW Europe
I10768	R-P310 (R1b)	Megiddo MB III–LB I	Atlantic Europe (R1b-P310 peaks in

⁴⁰Haber et al. (2017)—Continuity and Admixture in the Last Five Millennia of Levantine History, *American Journal of Human Genetics*. <https://pmc.ncbi.nlm.nih.gov/articles/PMC5544389/>

⁴¹Haber et al. (2020)—A Genetic History of the Near East from an aDNA Time Course Sampling Eight Points in the Past 4,000 Years, *American Journal of Human Genetics*, 107(1), 149–157. - <https://pmc.ncbi.nlm.nih.gov/articles/PMC7332655/>

⁴²Agranat-Tamir et al. (2020)—The Genomic History of the Bronze Age Southern Levant, *Cell*. <https://pmc.ncbi.nlm.nih.gov/articles/PMC10212583/>

⁴³Mallick et al. (2024) — The Allen Ancient DNA Resource (AADR): A Curated Compendium of Ancient Human Genomes, *Scientific Data*, 11, Article 182. <https://pmc.ncbi.nlm.nih.gov/articles/PMC10858950/>

			British Isles & France)
I2189	R-M417 (R1a)	Megiddo MB III–LB I	Ashkenazi Levites (R1a-M582) / Iran

I2189 is the direct paternal ancestor of the ~300,000 Ashkenazi Levites alive today — the only known unbroken biological line from Conquest-era Canaan to a living population. (*Behar et al. 2003 & 2017; Rootsi et al. 2013*). **Sample I2190**, found in the same K-10 strata at Megiddo (a city of Manasseh), was directly carbon-dated to **1496–1302 BC** without any recalibration required (Table S1, Agranat-Tamir et al. 2020).

TEL SHADUD — 1 Body

(*Jezreel Valley, Jezreel-Valley Israel_MLBA — Van den Brink et al. 2017*)

Sample	Subclade	Period	Descendants Cluster Today
I2062	R-PH4902 (R1b)	Israel MLBA (~1170 BC)	British Isles / Atlantic Europe

ASHKELON — 1 Body

(*Coastal Philistia — Feldman et al. 2019*)

Sample	Subclade	Period	Descendants Cluster Today
ASH067	R-M269 (R1b)	Ashkelon Iron I, Post-Ramses III (~1206 BC)	NW Europe (R1b-M269 is the single most common haplogroup in Western Europe)

The Principal Component Analysis (PCA) position of these labeled bodies (and others without confirmed haplogroups) shows a significant shift toward the European-related cluster, entirely unlike the surrounding population.⁴⁴

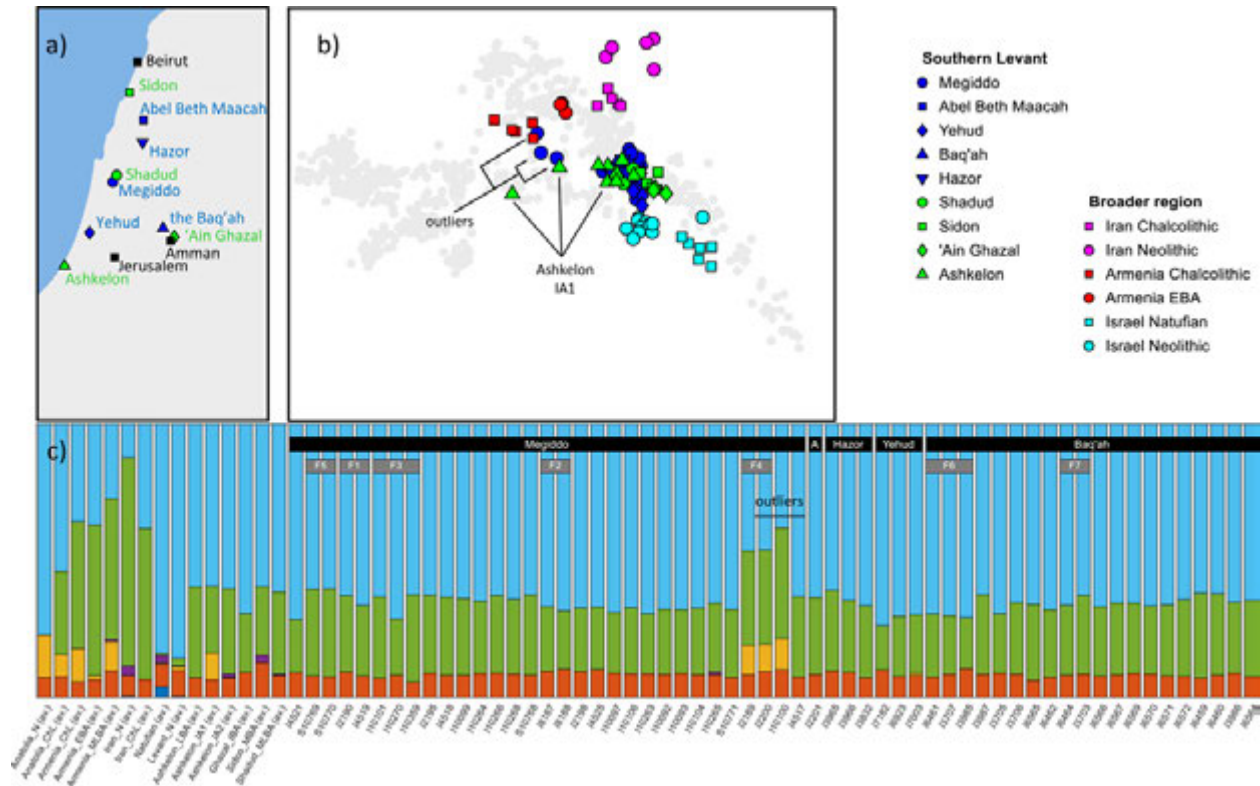


Figure 6 - The Genomic History of the Bronze Age Southern Levant, Fig 1. Agranat-Tamir et al. 2020.

What makes this finding remarkable is that Strontium Isotope Analysis (SIA)⁴⁵ confirms these individuals were born locally in the Levant—yet their genomic signature remained stubbornly distinct across multiple generations. They lived among the Canaanites, were born in Canaan, yet were never assimilated into the Canaanite genetic baseline. In every scientific sense of the word, they were a 'peculiar people' science now calls 'outliers.'

Criterion 2: Israel's Paternal Lines Must Pulse Into and Exit the Levant

"In the ninth year of Hoshea the king of Assyria took Samaria, and carried Israel away into Assyria, and placed them in Halah and in Habor by the river of Gozan, and in the cities of the Medes."—2 Kings 17:6

⁴⁴ Fig 1. The Genomic History of the Bronze Age Southern Levant, Agranat-Tamir et al. 2020.

⁴⁵Strontium Isotope Analysis (SIA) identifies place of birth/childhood by comparing the 87Sr/86Sr ratio in dental enamel against known geological signatures of specific regions.

Circa 1000 BC, David's census recorded approximately 1.57 million fighting men in Israel.⁴⁶ After the Assyrian exile (722 BC) and the Babylonian captivity (586 BC), only approximately 42,000 total people returned to Jerusalem.⁴⁷ Modern genetic studies document the sudden appearance of European-related ancestry at Israelite sites including Tel Shadud,⁴⁸ Ashkelon,⁴⁹ and Megiddo during the Bronze-to-Iron Age transition (c. 1500–1200 BC). This Haplogroup R signature achieves its population impact at precisely 1,000 BC—the era of the Davidic Kingdom—before diminishing as the exiles scatter the population northward.

"During the Iron Age (~1000 BCE), people with Anatolian and South-East European ancestry admixed with people in the Near East." - Haber et al. 2020

"We found that significant genetic changes that were marked by an increase in Eurasian ancestry related to ancient Europeans and ancient Central Asians occurred after the Bronze Age and starting from the Iron Age II [c. 1000 BC]" - Haber et al. 2020

Feldman et al. (2019) documents that the European-related component significantly fades in urban centers as J/E populations re-establish dominance following the exiles. Only trace remnants survive in modern Lebanon⁵⁰ and Iran.⁵²

Criterion 3: Israel's Levites Must Preserve the Ancient Genetic Signature

"Thus shalt thou separate the Levites from among the children of Israel: and the Levites shall be mine."—Numbers 8:14

The Levites were commanded to remain endogamous (Ex 2:1) and were distributed across all 48 Israelite cities (Num 35; Josh 21). Behar et al.⁵³ and Rootsi et al.⁵⁵ confirm that the vast majority of Ashkenazi Levites carry the R1a-M582 subclade, virtually absent in non-Levite Near Eastern

⁴⁶1 Chronicles 21:5 records 1,100,000 men in Israel and 470,000 in Judah = approximately 1.57 million fighting men total.

⁴⁷Ezra 2:64; Nehemiah 7:66—The whole assembly numbered 42,360 persons.

⁴⁸Van den Brink et al. (2017)—A Bronze Age Burial at Tel Shadud, Journal of the Israel Prehistoric Society. <https://www.researchgate.net/publication/316750073>

⁴⁹Feldman et al. (2019)—Ancient DNA Sheds Light on the Origins of the Philistines, Science Advances. <https://pmc.ncbi.nlm.nih.gov/articles/PMC6761207/>

⁵⁰Zalloua et al. (2008)—Y-Chromosomal Diversity in Lebanon Is Structured by Recent Historical Events, American Journal of Human Genetics. <https://pmc.ncbi.nlm.nih.gov/articles/PMC2427286/>

⁵¹Zalloua et al. (2012)— Zalloua et al. (2012) — Identifying Genetic Traces of Historical Expansions: Phoenician Footprints in the Mediterranean, American Journal of Human Genetics, 90(1), 149–154 - Note: R1b is more prevalent among Lebanese Christians than Lebanese non-Christians.

⁵²Grugni et al. (2012)—Ancient Migratory Events in the Middle East, PLOS ONE. <https://journals.plos.org/plosone/article?id=10.1371/journal.pone.0041252>

⁵³Behar et al. (2003)—Multiple Origins of Ashkenazi Levites: Y Chromosome Evidence for Both Near Eastern and European Ancestries, American Journal of Human Genetics. <https://pmc.ncbi.nlm.nih.gov/articles/PMC1180600/>

⁵⁴Behar et al. (2017)—The Genetic Variation in the R1a Clade Among the Ashkenazi Levites' Y Chromosome, Scientific Reports. <https://pmc.ncbi.nlm.nih.gov/articles/PMC5668307/>

⁵⁵Rootsi et al. (2013)—Phylogenetic Applications of Whole Y-Chromosome Sequences and the Near Eastern Origin of Ashkenazi Levites, Nature Communications. <https://www.nature.com/articles/ncomms3928>

populations. The modern Levite lineage (R1a-M582) descends directly from R1a-M417—the precise haplogroup of Sample I2189, buried at Megiddo.

When recalibrated using the 14th-century BC radiocarbon plateau, the Old Wood Effect, and the Levantine Offset,⁵⁶ Sample I2189 fits comfortably within the Joshua/Judges period (c. 1350 BC). To strengthen this argument, Sample I2190 in the same K-10 stratum was directly carbon-dated to 1496–1302 BC.⁵⁷

There is a direct, unbroken biological line from a body buried in Megiddo during the Conquest era to approximately 300,000 Ashkenazi Levites alive today. Moreover, the Levites' closest living genetic relatives are found in Iran—precisely where Benjamin of Tudela (1173 AD) recorded remnants of four Israelite tribes: Dan, Zebulun, Asher, and Naphtali.⁵⁸

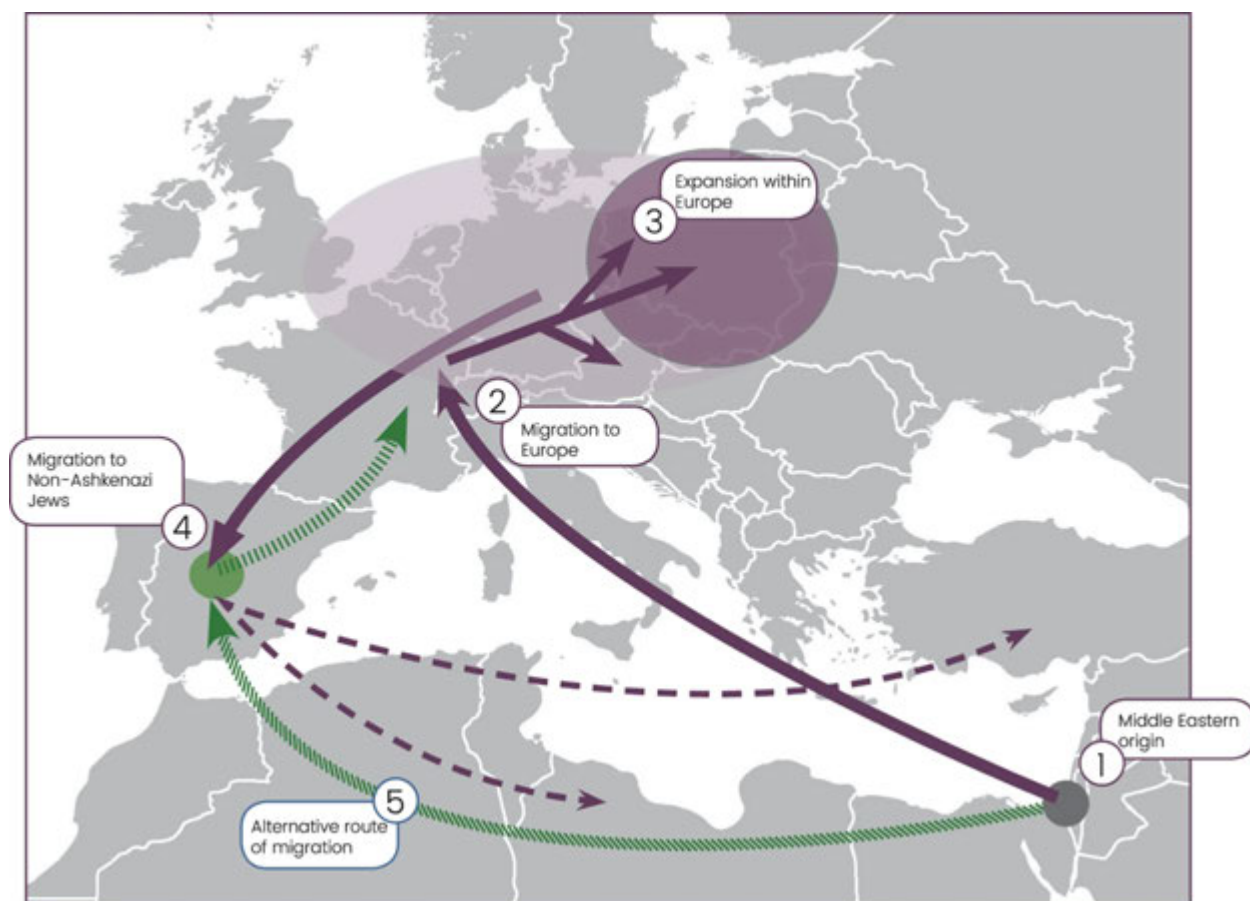


Figure 7 - Behar et al. 2017, Fig. 1 – Origin and expansion of the Ashkenazi Levite Y chromosome clade.

⁵⁶Manning et al. (2020)—Radiocarbon Calibration and the Levantine Offset, Radiocarbon. <https://pmc.ncbi.nlm.nih.gov/articles/PMC7116018/>

⁵⁷Sample I2190, K-10 stratum at Megiddo, directly carbon-dated to 1496–1302 BC (Table S1, Agranat-Tamir et al. 2020). This dating required no recalibration, serving as an independent anchor for the surrounding stratum.

⁵⁸Benjamin of Tudela, *The Itinerary*, translated by Marcus Nathan Adler, Oxford University Press, 1907, p. 59. <https://archive.org/details/itineraryofbenja00beniuoft>

Criterion 4: Israel Must Experience Leprosy and Tuberculosis at the Highest Levels

"The Lord will smite thee with the botch of Egypt, and with the emerods, and with the scab, and with the itch, whereof thou canst not be healed."—Deuteronomy 28:27

Matheson et al. (2009),⁵⁹ analyzing the Tomb of the Shroud in Jerusalem (c. 30 AD), found both Leprosy (*M. leprae*) and Tuberculosis (*M. tuberculosis*) in remains carrying the maternal Haplogroup H signature—a lineage that peaks today in Basque Country and Wales. Historical epidemiology confirms that the highest concentrations of both diseases subsequently occurred in Haplogroup R strongholds of Northern and Western Europe,^{60,61,62} which became the worldwide epicenter of both diseases.

Furthermore, the four maternal haplogroups recovered from the same Tomb of the Shroud—H, V, T, and W—each peak today in specific Haplogroup R populations:

- H in Basque Country and Wales,⁶³
- V in Fennoscandia,⁶⁴
- T in Eastern European Udmurts,⁶⁵ and
- W in Finland.⁶⁶

The remains buried in a first-century Jerusalem tomb genetically point north—to the same nations where Haplogroup R is dominant.

⁵⁹Matheson et al. (2009)—Molecular Exploration of the First-Century Tomb of the Shroud in Akeldama, Jerusalem, PLOS ONE. <https://journals.plos.org/plosone/article?id=10.1371/journal.pone.0008319>

⁶⁰Donoghue et al. (2005)—Co-infection of *M. tuberculosis* and *M. leprae* in Human Archaeological Samples, Infection, Genetics and Evolution. <https://pubmed.ncbi.nlm.nih.gov/15661651/>

⁶¹Schuenemann et al. (2018)—Ancient genomes reveal a high diversity of *Mycobacterium leprae* in medieval Europe, PLOS Pathogens.

⁶²Inskip et al. (2015)—Osteological, Biomolecular and Geochemical Examination of an Early Anglo-Saxon Case of Lepromatous Leprosy, PLOS ONE.

⁶³Pereira et al. (2005)—High-resolution mtDNA evidence for the late-glacial resettlement of Europe from an Iberian refugium, Genome Research.

⁶⁴Torroni et al. (2001)—A signal, from human mtDNA, of postglacial recolonization in Europe, American Journal of Human Genetics. Haplogroup V peaks in Fennoscandia.

⁶⁵Wilde et al. (2014)—Direct evidence for positive selection of skin, hair, and eye pigmentation in Europeans during the last 5,000 y, PNAS. Haplogroup T peaks in Eastern European Udmurt populations.

⁶⁶Torroni et al. (1996)—Classification of European mtDNAs From an Analysis of Three European Populations, Genetics. Haplogroup W peaks in Finland.

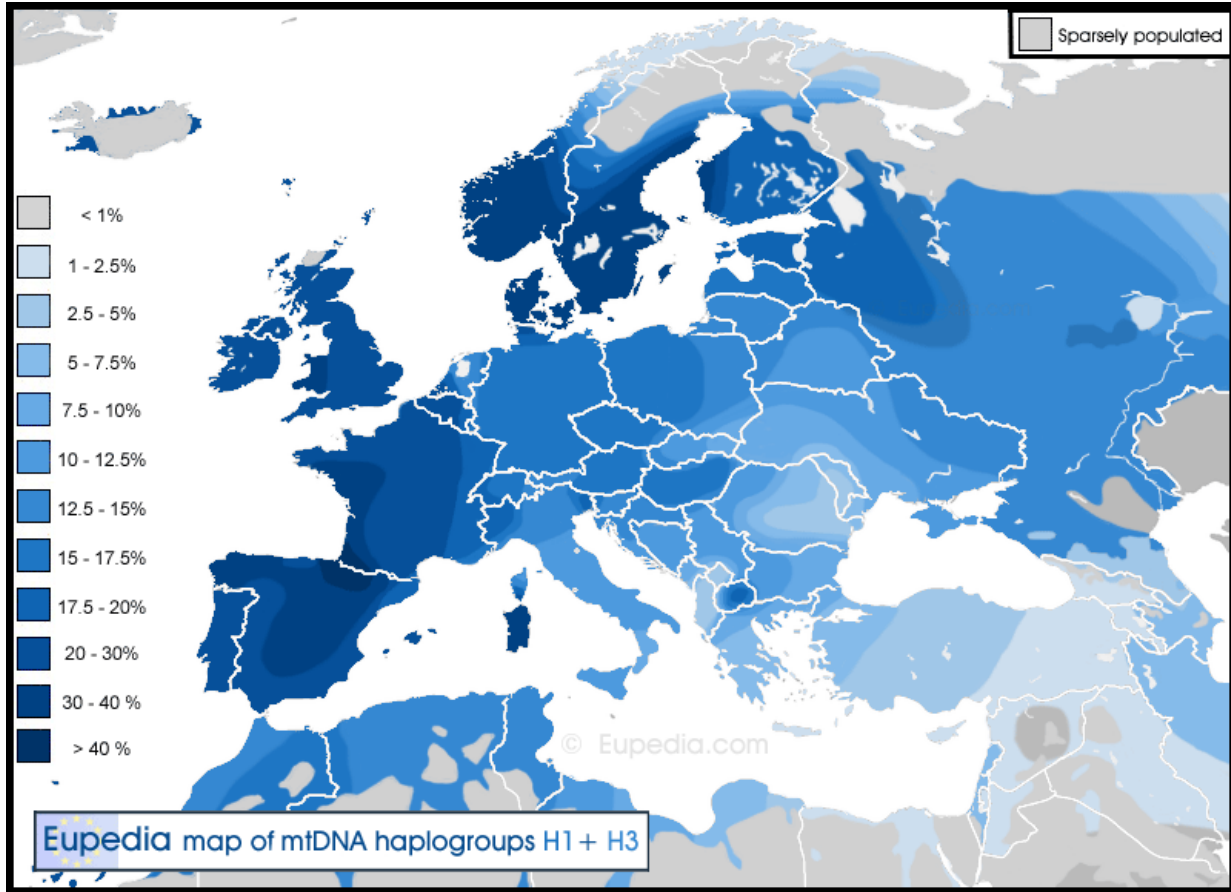


Figure 8 - Eupedia Map of mtDNA Haplogroup H

Criterion 5: Israel Must Have High Dairy Tolerance

"But I have said unto you, Ye shall inherit their land, and I will give it unto you to possess it, a land that floweth with milk and honey: I am the Lord your God, which have separated you from other people."—Leviticus 20:24

The Promised Land was described as flowing with milk and honey—a diet requiring **Lactase Persistence**, the genetic ability to digest dairy into adulthood. Bersaglieri et al. (2004)⁶⁷ confirms that the C/T-13910 allele is most prevalent in Northern and Western European populations—predominantly Haplogroup R—often reaching 90–100% tolerance, the highest rate on Earth.⁶⁸ In striking contrast, indigenous Near Eastern populations average only ~25%, and East Asian

⁶⁷Bersaglieri et al. (2004)—Genetic Signatures of Strong Recent Positive Selection at the Lactase Gene, American Journal of Human Genetics. <https://pmc.ncbi.nlm.nih.gov/articles/PMC1182075/>

⁶⁸Itan et al. (2010)—A Worldwide Correlation of Lactase Persistence Phenotype and Genotypes, BMC Evolutionary Biology. <https://pmc.ncbi.nlm.nih.gov/articles/PMC2834688/>

populations as low as 1%.⁶⁹⁷⁰ The same population commanded to inherit a land flowing with milk is the same population uniquely equipped to digest it.

*“He made him ride on the high places of the earth,
And he ate the produce of the field;
And He made him suck honey from the rock,
And oil from the flinty rock, Curds of cows, and milk of the flock...” –
Deuteronomy 32:13-14*

Criterion 6: Following Dispersion, Israel Must Forget Its Heritage

“My people hath been lost sheep: their shepherds have caused them to go astray, they have turned them away on the mountains: they have gone from mountain to hill, they have forgotten their resting place.”—Jeremiah 50:6

One of the most striking themes in prophetic literature is that Israel, during the long years of its dispersion, would forget who it was. For example, after merely 70 years in Babylon, the returning Israelites had already forgotten their own language.⁷¹ How much more would the Lost Sheep of Israel forget their heritage over the millennia?

The vast majority of the Haplogroup R populations in the North completely forgot their ancestral connection to the Levant, fulfilling this prophetic curse with remarkable precision. Yet certain cultural fingerprints remained. Celtic, spoken across Europe until the 3rd century AD, possesses a precise VSO syntax and inflected prepositions—grammatical structures aligning with Biblical Hebrew even more closely than with Arabic.⁷²

⁶⁹Tishkoff et al. (2007)—Convergent Adaptation of Human Lactase Persistence in Africa and Europe, *Nature Genetics*. <https://pmc.ncbi.nlm.nih.gov/articles/PMC2672153/>

⁷⁰Storhaug et al. (2017)—Country, regional, and global estimates for lactose malabsorption in adults: a systematic review and meta-analysis, *The Lancet Gastroenterology & Hepatology*.

⁷¹Nehemiah 13:24—'...half of their children spoke the language of Ashdod or the language of various peoples, and did not know how to speak the language of Judah.'

⁷²Dr. Thomas Stratton—The Affinity between the Hebrew Language and Celtic. (Print reference—no free digital edition currently available.)

The Celtic Church across Scotland, Ireland, Wales, Cornwall, and Gaul observed Saturday as the Sabbath well into the 11th century, when Queen Margaret of Scotland was required to convene a formal council to abolish it.⁷⁴⁷⁵⁷⁶⁷⁷ This Saturday Sabbath tradition, observed long before Roman Catholic influence reached these regions, is consistent with an early Apostolic Christianity distinct from Rome—precisely what Tertullian, Eusebius, and Gildas attest to in Criterion 7.

Criterion 7: Following the Resurrection, Israel Must Be Visited Early by the Apostles

"These twelve Jesus sent forth, and commanded them, saying, Go not into the way of the Gentiles, and into any city of the Samaritans enter ye not: But go rather to the Lost Sheep of the House of Israel."—Matthew 10:5-6

Jesus gave the original Twelve a specific commandment: bypass the Gentiles, bypass the Samaritans, and go to the Lost Sheep of the House of Israel (Jeremiah 50:6). Paul confirms the division of labor in Galatians 2:7-9: Peter, James, and John were entrusted with the gospel 'to the circumcised'—the Lost Sheep—while Paul was called to the Gentiles. James writes his epistle 'to the twelve tribes which are scattered abroad' (James 1:1). Peter addresses his first letter to the diaspora scattered throughout Pontus, Galatia, Cappadocia, Asia, and Bithynia—all in Anatolia, precisely where Haplogroup R remnants appear in the archaeological record.

⁷⁴Turgot of Durham—Vita S. Margaritae (Life of St. Margaret), Section 20.
<https://archive.org/details/lifeofstmargaret00turguoft>

⁷⁵Prof. James C. Moffatt, D.D.—The Church in Scotland (1882), p. 140: 'It seems to have been customary in the Celtic churches of early times, in Ireland as well as Scotland, to keep Saturday, the Jewish Sabbath, as a day of rest from labour. They obeyed the fourth commandment literally upon the seventh day of the week.'

⁷⁶Prof. Andrew Lang—A History of Scotland from the Roman Occupation, Vol. 1, p. 96 (1900).

⁷⁷W.F. Skene—Celtic Scotland, Vol. II, pp. 348–350 (1877).



Figure 11 - Map of Y-DNA Haplogroups of Europe, the Middle East, and North Africa

Four independent historical sources confirm the Apostles reached the British Isles within years of the Resurrection:

- **Tertullian** (c. 155–220 AD) states in Latin: *'Et Britannorum inaccessa Romanis loca Christo vero subdita'*—'The places of the Britons, inaccessible to the Romans, truly subjected to Christ'—confirming the Gospel reached the British Isles prior to the Roman conquest of Britain in AD 43.⁷⁸⁷⁹
- **Eusebius** (c. 260–340 AD) records that in the first century the Apostles 'crossed the Ocean and reached the Isles of Britain.'⁸⁰
- **Gildas** (6th century) provides an exact date: the Gospel reached Britain during 'the latter part of the reign of Tiberius Caesar'—whose reign ended in AD 37, six years after the Resurrection⁸¹ in 31 AD.⁸²
- **The Scottish Declaration of Arbroath** (1320) states that the Scots journeyed from Greater Scythia—the lands north of Assyria—arriving 'twelve hundred years after the people of Israel crossed the Red Sea,' confirmed in the faith by Saint Andrew, the first-called of the Twelve.⁸³ There is only one reason the Apostles would travel that far, that fast: they were seeking the Lost Sheep of Israel exactly as the Lord Jesus had commanded them.

Criterion 8: In the Last Days, Israel Must Be Predominantly North and at the Ends of the Earth

"Behold, I will bring them from the north country, and gather them from the farthest parts of the earth, among them the blind and the lame, the pregnant woman and she who is in labor, together; a great company, they shall return here."—Jeremiah 31:8

The prophets are unanimous and repetitive on this point: in the Last Days, God will bring Israel primarily from the North and from the ends of the earth. This appears in Jeremiah, Zechariah, Isaiah, and Deuteronomy across multiple independent passages. Worldwide Y-DNA frequency

⁷⁸Tertullian (c. 155–220 AD), *Adversus Judaeos* (Against the Jews), Chapter 7, Section 4: 'Et Britannorum inaccessa Romanis loca Christo vero subdita.' <https://www.newadvent.org/fathers/0308.htm>

⁷⁹Tacitus, *Annals* XII.32; Colchester Archaeological Trust. The first permanent Roman fortress in Britain (Camulodunum/Colchester) was established following the Claudian invasion of AD 43.

⁸⁰Eusebius (c. 260–340 AD), *Demonstratio Evangelica*, Book 3, Chapter 7, pp. 112–113 (Ferrar translation). https://www.tertullian.org/fathers/eusebius_de_05_book3.htm

⁸¹Gildas (6th century), *De Excidio et Conquestu Britanniae*, Section 8. <https://www.gutenberg.org/ebooks/1949>

⁸² Tidwell, Rev Rich. "Decoding Daniel's Messiah Prophecy." International Seminary, 2020. https://www.academia.edu/42196338/Decoding_Daniels_Messiah_Prophecy.

⁸³The Declaration of Arbroath (1320), Yale Avalon Project: 'we came from Greater Scythia by way of the Tyrrhenian Sea and the Pillars of Hercules... twelve hundred years after the people of Israel crossed the Red Sea...' https://avalon.law.yale.edu/medieval/arbroath_1320.asp

maps confirm⁸⁴⁸⁵⁸⁶ that Haplogroup R dominates precisely these regions: Europe, Russia, and Scandinavia to the north of the Levant; as well as Australia, New Zealand, South Africa, and South America at the geographic extremities of the inhabited world. When viewed on an azimuthal equidistant projection of the earth, such as the Gleason Standard Map of the World,⁸⁷ the correspondence between the prophetic map and the genetic map achieves a precision that, in the words of Eusebius regarding the apostolic mission to Britain, is best explained not as the work of mere men, but of Divine Providence.

It is worth noting that Europeans have been uniquely labeled "Colonizers" in modern discourse—almost always as a moral indictment. Nevertheless, the territorial expansion of Haplogroup R populations across the earth is precisely what the God of Israel (YHWH⁸⁸) promised to the seed of Jacob: "Every place that the sole of your foot will tread upon I have given you" (Josh 1:3). Likewise, Isaiah 54:3 declares that Israel's descendants would "dispossess nations and settle in their desolate cities," and Deuteronomy 33:17 prophesies that the sons of Joseph would push "all peoples to the ends of the earth." The nations modern culture aggressively labels Colonizers now occupy the very regions Israel was prophesied to inhabit in the Last Days.

Reference	Direction	Context
Jer 3:12	North explicitly	Call to return
Jer 3:18	North explicitly	End times reunification
Jer 16:14-15	North country	Second Exodus prophecy
Jer 23:7-8	North country	Second Exodus (repeated)
Jer 31:8	North country	Last days regathering
Isa 43:5-6	North included	Four-directional regathering
Isa 49:12	North and west	End times return
Isa 11:11-12	Assyria/north first	Second regathering explicitly
Zech 2:6	North explicitly	Flee from the north
Zech 6:6-8	North country	Spirit rests in the north
Deut 30:3-4	Ends of earth	Scattering and return
Deut 28:64	Ends of earth	Condition of dispersion

⁸⁴ Jobling & Tyler-Smith (2017)—Human Y-Chromosome Variation in the Genome-Sequencing Era, *Nature Reviews Genetics*. <https://www.nature.com/articles/nrg.2017.36>

⁸⁵ Poznik et al. (2016)—Punctuated Bursts in Human Male Demography Inferred from 1,244 Worldwide Y-Chromosome Sequences, *Nature Genetics*. <https://pmc.ncbi.nlm.nih.gov/articles/PMC4884805/>

⁸⁶ Karmin et al. (2015)—A Recent Bottleneck of Y Chromosome Diversity Coincides with a Global Change in Culture, *Genome Research*. <https://pmc.ncbi.nlm.nih.gov/articles/PMC4381518/>

⁸⁷ The Gleason Standard Map of the World (1892) presents an azimuthal equidistant projection centered on the North Pole. When the prophetic language of 'ends of the earth' is mapped on this projection, the lands colonized by Haplogroup R—Australia, New Zealand, South Africa, and the Americas—appear at the outer geographic extremities, consistent with multiple prophetic descriptions.

⁸⁸ YeHoWaH, the God of the Israelites and all creation.

A Final Observation: The Twelve European Genetic Pools

Lazaridis et al. (2015),⁸⁹ conducting a Principal Component Analysis of modern West Eurasian populations, found twelve genetically distinct but closely related European populations clustering tightly together and distinctly apart from all other Shemite populations on the chart:

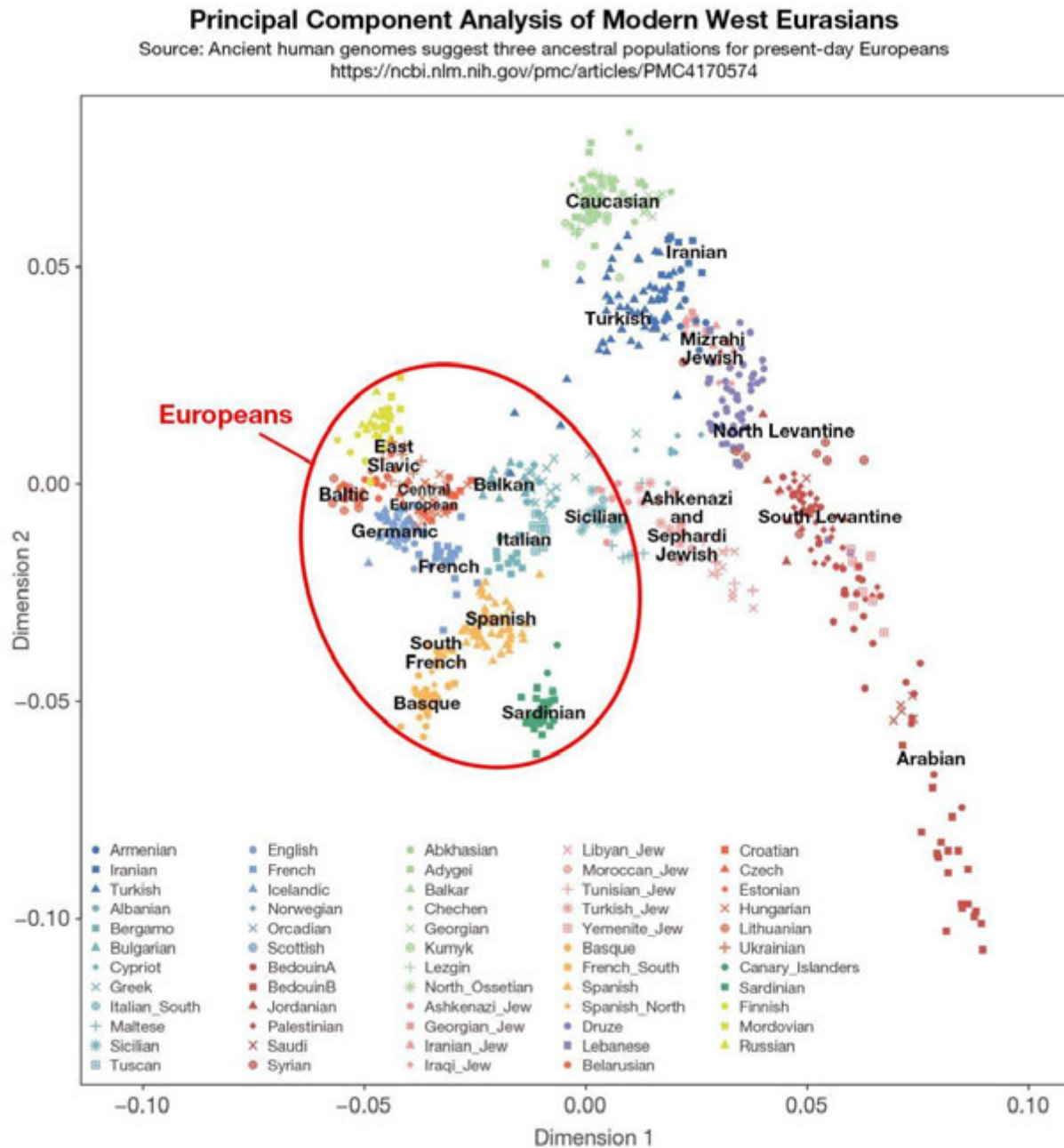


Figure 12 - Map of West Eurasian populations and Principal Component Analysis, Fig. 1b Lazaridis et al. (2015), Nature 513:409–413. PMC4170574.

⁸⁹Lazaridis et al. (2015)—Ancient Human Genomes Suggest Three Ancestral Populations for Present-Day Europeans, Nature (PMC4170574). <https://pmc.ncbi.nlm.nih.gov/articles/PMC4170574/>

The 12 genetic clusters revealed by the Lazaridis et al. (2015) PCA:

1. East Slavic,
2. Baltic,
3. Central European,
4. Germanic,
5. Balkan,
6. Italian,
7. French,
8. Spanish,
9. South French,
10. Basque,
11. Sardinian, and
12. Sicilian.

Critically, the Ashkenazi and Sephardi Jewish populations appear on the same chart *outside* the European circle, positioned between the European cluster and the Levantine populations—the genetic signature of a population that is neither European nor fully Levantine.⁹⁰ They are Shemitic in origin, as Haplogroup J is a Shemite haplogroup, but they are not Israel (Rev 3:9). This genetic positioning is precisely what Part I, the Edomite Hypothesis, predicted: the Edomites (Ashkenazi) are adjacent to Israel (Europeans) but not among them, adjacent to the territory given Jacob but not of it—the exact proximity Edom (Idumea) maintained to Israel throughout ancient history.

Could these twelve European genetic pools be a visualization of the twelve tribes of Israel—scattered, separated by centuries of migration and history, yet retaining enough shared ancestry to cluster together on a modern genetic chart, distinct from every other people group on earth? The probability that this is all coincidence diminishes with every genetic study, every site excavated, every criterion examined.

⁹⁰The Ashkenazi and Sephardi Jewish populations appear on the Lazaridis et al. (2015) PCA chart between the European cluster and the Levantine populations (North Levantine, South Levantine, Arabian)—consistent with the mixed Edomite-Canaanite-Ishmaelite ancestry described in Genesis 36:2-3.



Figure 13 - Map of Ancient Israel and Edom

Combined Conclusion

Taken together, the two parts of this study constitute a convergent argument of prophetic consequence. Part I established—through the historiography of Josephus, the admissions of Dr. Karl Skorecki, the records of Ptolemy of Ascalon, the genetics of Agranat-Tamir et al. (2020), and the prophetic testimony of Ezekiel, Obadiah, and Zechariah—that the modern occupiers of Jerusalem are Edomite converts to Judaism, not the biological tribe of Judah. They are the Synagogue of Satan: 'who say they are Jews and are not, but lie' (Rev 3:9).

Part II then established—through eight criteria simultaneously satisfied by Haplogroup R populations of Europe and their diaspora—that the true genetic descendants of Jacob are Europeans. These 'Lost Sheep of the House of Israel' are presently in prophetic amnesia in the North and at the ends of the earth (Jer 31:8; 50:6). Meanwhile, the Ashkenazi and Sephardi Jewish populations appear on the Lazaridis et al. (2015) PCA chart precisely where Edomite-Canaanite mixed ancestry would place them: outside the European circle, between the European cluster and the Levantine populations.

Both studies remain hypotheses—proposed explanations made on the basis of mounting evidence demanding serious investigation.

As we conclude this study, I would like to reaffirm my position that being a biological descendant of Jacob does not make one an automatic recipient of salvation (Rom 9:6); Christ's blood was shed for all of humanity and His invitation is open to every tongue, tribe, and nation (Rev 7:9, Isa 49:6). What is asserted is that the prophetic scriptures describe a specific ethnic group with specific characteristics—and that modern genetic science, ancient archaeology, early Church history, and comparative linguistics are converging on a single candidate: the Haplogroup R populations of Europe and their diaspora.

"Behold, I will bring them from the north country and gather them from the farthest parts of the earth..."—Jeremiah 31:8

Veritas Christo et Ecclesiae,

Rev. R. D. Tidwell

Bibliography

Part I—The Edomite Hypothesis

Primary Historical Sources

Josephus, Flavius—Antiquities of the Jews (Whiston translation): Books 14–17. <https://sacred-texts.com/jud/josephus/index.htm#aoj>

Josephus, Flavius—Jewish War (Whiston translation): Book 2. <https://sacred-texts.com/jud/josephus/index.htm#aoj>

Ptolemy of Ascalon—De Differentia Vocabulorum, no. 243 (as quoted by Ammonius). See: Katell Berthelot, 'Judaism as Citizenship and the Question of the Impact of Rome.' <https://hal.science/hal-02338890v1/document>

Churchill, Winston S.—'Zionism versus Bolshevism: A Struggle for the Soul of the Jewish People,' Sunday Herald (London), February 8, 1920, p. 5. https://en.wikisource.org/wiki/Zionism_versus_Bolshevism

Genetic Studies

Agranat-Tamir et al. (2020)—The Genomic History of the Bronze Age Southern Levant, *Cell*. <https://www.sciencedirect.com/science/article/pii/S0092867420304876>

Skorecki, Karl (1997)—Discovery of the Cohen Modal Haplotype (CMH). Interview: The Ask Project. https://youtu.be/OOeJr0z_01M

Scriptural Sources

Genesis 36:2; Ezekiel 35:10; 36:5; Obadiah 1:1-21; Jeremiah 3:17-18; Isaiah 11:11-12; Amos 9:11-12; Zechariah 14:21; Malachi 1:4; Revelation 3:9; 2 Thessalonians 2:9-12; Luke 21:24.

Political/Governmental Sources

OpenSecrets.org—Pro-Israel PAC contributions data. <https://www.opensecrets.org/industries/indus?ind=Q05>

Track AIPAC—Pro-Israel interest group spending data. <https://www.trackaipac.com/trump>

Council on Foreign Relations—U.S. Aid to Israel: Four Charts. <https://www.cfr.org/articles/us-aid-israel-four-charts>

Balfour Declaration (1917)—https://en.wikipedia.org/wiki/Balfour_Declaration

Part II—The Lost Sheep Found

Peer-Reviewed Genetic Studies

Agranat-Tamir et al. (2020)—The Genomic History of the Bronze Age Southern Levant, *Cell*. <https://pmc.ncbi.nlm.nih.gov/articles/PMC10212583/>

Behar et al. (2003)—Multiple Origins of Ashkenazi Levites, *American Journal of Human Genetics*. <https://pmc.ncbi.nlm.nih.gov/articles/PMC1180600/>

Behar et al. (2017)—The Genetic Variation in the R1a Clade Among the Ashkenazi Levites' Y Chromosome, *Scientific Reports*. <https://pmc.ncbi.nlm.nih.gov/articles/PMC5668307/>

Bersaglieri et al. (2004)—Genetic Signatures of Strong Recent Positive Selection at the Lactase Gene, *American Journal of Human Genetics*. <https://pmc.ncbi.nlm.nih.gov/articles/PMC1182075/>

Clemente et al. (2021)—The Genomic History of the Aegean Palatial Civilizations, *Cell*. [https://www.cell.com/cell/fulltext/S0092-8674\(21\)00460-6](https://www.cell.com/cell/fulltext/S0092-8674(21)00460-6)

Donoghue et al. (2005)—Co-infection of *M. tuberculosis* and *M. leprae* in Human Archaeological Samples, *Infection, Genetics and Evolution*. <https://pubmed.ncbi.nlm.nih.gov/15661651/>

Feldman et al. (2019)—Ancient DNA Sheds Light on the Origins of the Philistines, *Science Advances*. <https://pmc.ncbi.nlm.nih.gov/articles/PMC6761207/>

Grugni et al. (2012)—Ancient Migratory Events in the Middle East, *PLOS ONE*. <https://journals.plos.org/plosone/article?id=10.1371/journal.pone.0041252>

Haber et al. (2017) — Continuity and Admixture in the Last Five Millennia of Levantine History from Ancient Canaanite and Present-Day Lebanese Genome Sequences, *American Journal of Human Genetics*, 101(2), 274–282. <https://pmc.ncbi.nlm.nih.gov/articles/PMC5544389/>

Haber et al. (2019) — A Transient Pulse of Genetic Admixture from the Crusaders in the Near East Identified from Ancient Genome Sequences, *American Journal of Human Genetics*, 104(5), 977–984. <https://pmc.ncbi.nlm.nih.gov/articles/PMC6506814/>

Haber et al. (2020) — A Genetic History of the Near East from an aDNA Time Course Sampling Eight Points in the Past 4,000 Years, *American Journal of Human Genetics*, 107(1), 149–157. <https://pmc.ncbi.nlm.nih.gov/articles/PMC7332655/>

Inskip et al. (2015)—Osteological, Biomolecular and Geochemical Examination of an Early Anglo-Saxon Case of Lepromatous Leprosy, *PLOS ONE*. <https://journals.plos.org/plosone/article?id=10.1371/journal.pone.0133282>

Itan et al. (2010)—A Worldwide Correlation of Lactase Persistence Phenotype and Genotypes, *BMC Evolutionary Biology*. <https://pmc.ncbi.nlm.nih.gov/articles/PMC2834688/>

Jobling & Tyler-Smith (2017)—Human Y-Chromosome Variation in the Genome-Sequencing Era, *Nature Reviews Genetics*. <https://www.nature.com/articles/nrg.2017.36>

Karmin et al. (2015)—A Recent Bottleneck of Y Chromosome Diversity Coincides with a Global Change in Culture, *Genome Research*. <https://pmc.ncbi.nlm.nih.gov/articles/PMC4381518/>

Lazaridis et al. (2015)—Ancient Human Genomes Suggest Three Ancestral Populations for Present-Day Europeans, *Nature*. <https://pmc.ncbi.nlm.nih.gov/articles/PMC4170574/>

Lazaridis et al. (2017)—Genetic Origins of the Minoans and Mycenaeans, *Nature*. <https://www.nature.com/articles/nature23310>

Mallick et al. (2024) — The Allen Ancient DNA Resource (AADR): A Curated Compendium of Ancient Human Genomes, *Scientific Data*, 11, Article 182. <https://pmc.ncbi.nlm.nih.gov/articles/PMC10858950/>

Manning et al. (2020)—Radiocarbon Calibration and the Levantine Offset, *Radiocarbon*. <https://pmc.ncbi.nlm.nih.gov/articles/PMC7116018/>

Matheson et al. (2009)—Molecular Exploration of the First-Century Tomb of the Shroud in Akeldama, Jerusalem, *PLOS ONE*. <https://journals.plos.org/plosone/article?id=10.1371/journal.pone.0008319>

Poznik et al. (2013)—Sequencing Y Chromosomes Resolves Discrepancy in Time to Common Ancestor of Males Versus Females, *Science*. <https://pmc.ncbi.nlm.nih.gov/articles/PMC4032117/>

Poznik et al. (2016)—Punctuated Bursts in Human Male Demography Inferred from 1,244 Worldwide Y-Chromosome Sequences, *Nature Genetics*. <https://pmc.ncbi.nlm.nih.gov/articles/PMC4884805/>

Rootsi et al. (2013)—Phylogenetic Applications of Whole Y-Chromosome Sequences and the Near Eastern Origin of Ashkenazi Levites, *Nature Communications*. <https://www.nature.com/articles/ncomms3928>

Sahakyan et al. (2017)—Origin and spread of human mitochondrial DNA haplogroup U7, *Scientific Reports*, Vol. 7, Article 46044. <https://pmc.ncbi.nlm.nih.gov/articles/PMC5384202/>

Schuenemann et al. (2018)—Ancient genomes reveal a high diversity of *Mycobacterium leprae* in medieval Europe, *PLOS Pathogens*. <https://journals.plos.org/plospathogens/article?id=10.1371/journal.ppat.1006997>

Semino et al. (2004)—Origin, Diffusion, and Differentiation of Y-Chromosome Haplogroups E and J, *American Journal of Human Genetics*. <https://pmc.ncbi.nlm.nih.gov/articles/PMC1182204/>

Storhaug et al. (2017)—Country, regional, and global estimates for lactose malabsorption in adults: a systematic review and meta-analysis, *The Lancet Gastroenterology & Hepatology*, 2(10), 738–746. [https://www.thelancet.com/journals/langas/article/PIIS2468-1253\(17\)30154-1/fulltext](https://www.thelancet.com/journals/langas/article/PIIS2468-1253(17)30154-1/fulltext)

Tateno et al. (2014)—Divergence of East Asians and Europeans Estimated Using Male- and Female-Specific Genetic Markers, *Genome Biology and Evolution*. <https://pmc.ncbi.nlm.nih.gov/articles/PMC3971580/>

Tishkoff et al. (2007)—Convergent Adaptation of Human Lactase Persistence in Africa and Europe, *Nature Genetics*. <https://pmc.ncbi.nlm.nih.gov/articles/PMC2672153/>

Van den Brink et al. (2017)—A Bronze Age Burial at Tel Shadud, *Journal of the Israel Prehistoric Society*. <https://www.researchgate.net/publication/316750073>

Zalloua et al. (2012) — Identifying Genetic Traces of Historical Expansions: Phoenician Footprints in the Mediterranean, *American Journal of Human Genetics*, 90(1), 149–154. <https://pmc.ncbi.nlm.nih.gov/articles/PMC3257876/>

Zhong et al. (2011)—Extended Y Chromosome Investigation Suggests Postglacial Migrations of Modern Humans into East Asia via the Northern Route, *Molecular Biology and Evolution*, 28(1), 717–727. <https://academic.oup.com/mbe/article/28/1/717/988731>

Scriptural Sources

Genesis 10:4-6; 36:2; 48:19; Exodus 2:1; Numbers 8:14; 35; Deuteronomy 6:21; 7:1-4; 14:2; 19:15; 28:22; 28:27; 28:64; 29:4; 30:3-4; 32:13-14; 33:17; Joshua 1:3; 15:25; 21; 1 Kings 10:22; 1 Chronicles 21:5; 2 Chronicles 9:20-21; Ezra 2:64; 9–10; Nehemiah 7:66; 13:23-27; Psalms 72:10; 78:51; 105:23; 106:22; Isaiah 11:11-12; 43:5-6; 49:6; 49:12; 54:3; 60:9; 66:19; Jeremiah 3:12; 3:17-18; 16:14-15; 23:7-8; 31:8; 31:36; 46:9; 48:24; 50:6; Ezekiel 37; Amos 9:11-12; Obadiah 1:2; 1:21; Zechariah 2:6; 6:6-8; 14:21; Malachi 1:4; Matthew 10:5-6; 15:24; Mark 16:15-16; Luke 22:3; John 1:44; 8:33; 12:21; 21:2; Acts 1:11; 2:7; Romans 9:4-6; 11:24; Galatians 2:7-9; 3:28; James 1:1; 1 Peter 1:1; Revelation 3:9; 7:9.

Historical Primary Sources

Benjamin of Tudela—The Itinerary, trans. Marcus Nathan Adler, Oxford University Press, 1907. <https://archive.org/details/itineraryofbenja00beniuoft>

Declaration of Arbroath (1320)—Yale Avalon Project. https://avalon.law.yale.edu/medieval/arbroath_1320.asp

Eusebius—Demonstratio Evangelica (Proof of the Gospel), Book 3, Ferrar translation. https://www.tertullian.org/fathers/eusebius_de_05_book3.htm

Gildas—De Excidio et Conquestu Britanniae (On the Ruin of Britain). <https://www.gutenberg.org/ebooks/1949>

Josephus, Flavius—Antiquities of the Jews and Jewish War, Whiston translation. <https://sacred-texts.com/jud/josephus/index.htm#aoj>

Tertullian—Adversus Judaeos (Against the Jews). <https://www.newadvent.org/fathers/0308.htm>

Turgot of Durham—Vita S. Margaritae (Life of St. Margaret). <https://archive.org/details/lifeofstmargaret00turguoft>

Secondary Historical & Linguistic Sources

Blackstone, Sir William—Commentaries on the Laws of England (1765–1769). https://avalon.law.yale.edu/subject_menus/blackstone.asp

Lang, Andrew (Prof.)—A History of Scotland from the Roman Occupation, Vol. 1 (1900).

Moffatt, James C. (Prof., D.D.)—The Church in Scotland (1882).

Skene, W.F.—Celtic Scotland, Vol. II (1877).

Stratton, Thomas (Dr.)—The Affinity between the Hebrew Language and Celtic. (Print reference.)